



Drive-Over Hopper



Fast, Convenient, Portable Unloading

Model S7100 Drive-Over Hopper for Permanent Installations:

- Capacity of up to 7,000 Bu/Hr.
- Dual roller chains with UHMW paddles
- 10" overall height
- Splash guard keeps grain contained in the center dump area
- Bolt-on end cover can be easily removed for service and clean-out
- Jackshaft reduction drive
- Optional 30" spout extension may be added

Portable Model S7000 features all of the above, plus:

- Spring-loaded ramps that can be easily raised and lowered by one person
- Ramps can be easily removed
- Hitch folds up and out of the way when not in use
- 13" tires
- Hitch jack is standard



Bottom Dump or Side-Discharge Unloading

The Sukup Drive-Over Hopper can be used with bottom-dump trailers or side-discharge grain wagons.

- The center dump area is a large 32" x 48".
- Converts instantly to a side-unload unit.
- Rubber belting splash guard keeps grain contained to the dump area.
- Side-discharge cover doubles as a splash guard to keep grain confined in the dump area.

Excellent Capacities

The Sukup Drive-Over Hopper is designed to maintain maximum capacity.

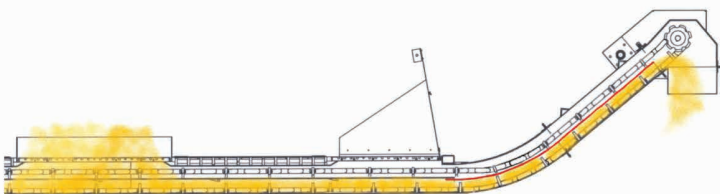
- Grain falls through to completely fill the bottom of paddle sections
- The top chain levels off the grain before it reaches the throat, helping to prevent plugging
- The divided throat (shown in red) "captures" the grain, so it can't flow backwards while ascending to the discharge



Clean-Out

For those operations in which it is critical to get the hopper thoroughly cleaned out, Sukup designed a unit with few places for grain to accumulate.

- The UHMW paddles run the full width between the chains, so there is little area for grain to accumulate.
- Minimum paddle clearance on the take-up end means there is less grain to clean out
- The end cover is quickly removed for easy clean-out when operation is complete



S7000 - Quick Conversions

The Sukup Drive-Over Hopper quickly converts from transport to unloading position and back again.

- The wheels are removed after transport with the pull of a pin.
- Ramps are spring-loaded so, even though they are built tough, one person can easily raise and lower them.
- Ramps can be easily removed for those applications where they are not required.

Rugged Construction

The Sukup Drive-Over Hopper is ruggedly built to withstand the stress of years of use.

- Drive-over grates are reinforced.
- Ramp surfaces are made of extra-heavy diamond decking for durability and traction.
- Unit weighs 3,000 lbs.



Sukup Manufacturing Co. provides the information contained within this brochure to assist you in choosing the optimal equipment for your situation. Sukup specifications should only be used as estimates, and not as a warranty, expressed or implied, of how a particular Sukup unit will perform under your varying operating conditions. Because we are continually improving Sukup products, changes may occur that may not be reflected in the specifications.

DANGER! Failure to heed these warnings may result in serious injury or death. Keep away from moving parts. Keep children away when operating. Keep all shields in place. Not intended for highway travel. Maximum speed – 20 mph. See manual for other safety warnings & instructions.

Permanent Installation

Sukup S7100 Drive-Over Hopper

The S7100 has the same features as the standard Sukup Drive-Over Hopper, including: dual roller chains and UHMW paddles, rugged construction and excellent capacities.

Since it is designed for permanent installation, the S7100 does not include transport components such as ramps, transport wheels and assembly, jack and tongue.

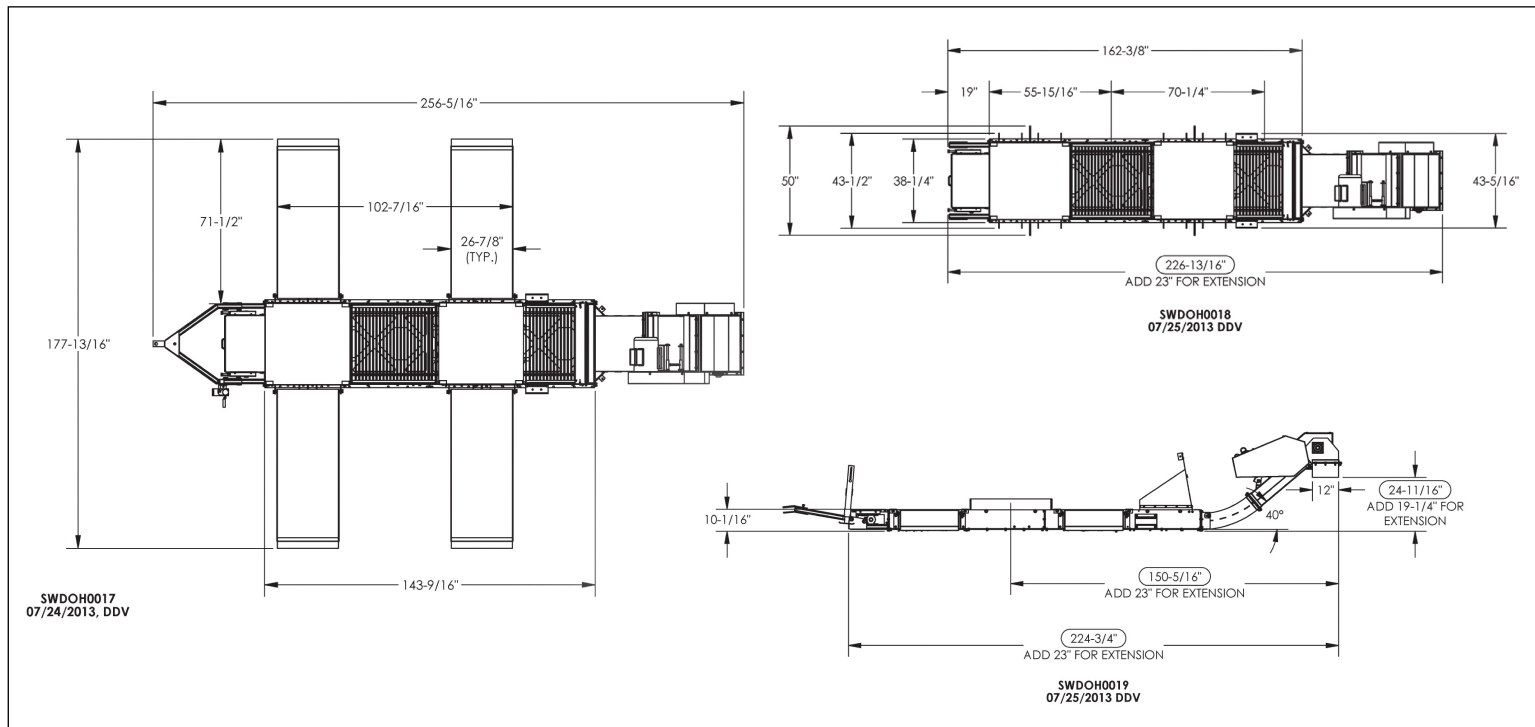


Options

- Choice of four motor and drive packages – 3, 5, 7.5, or 10 hp.
- Hydraulic drive kit is available for running the hopper in locations without electricity.
- Flow control is also available for the hydraulic drive.
- A 30" spout extension may be added.



Drive-Over Hopper Dimensions



DRYING STORAGE and HANDLING

Solutions®

We've spent 50 years developing innovative, efficient, and reliable products to meet the ever-expanding needs of grain producers. With a full-line of product Solutions®, you need look no further than Sukup for your grain handling, storage, drying and steel building needs.



Sukup Manufacturing Co. - www.sukup.com

Box 677 • 1555 255th St. • Sheffield, IA 50475-0677 • ph 641.892.4222 • fx 641.892.4629 • info@sukup.com

Distribution Centers

Arcola, IL 61910
980 E. State Rte. 133
ph 217.268.3026
Illinois@sukup.com

Aurora, NE 68818
1705 Hwy. 34 E.
ph 402.694.5922
nebraska@sukup.com

Cameron, MO 64429
7426 NE 352nd St.
ph 816.649.2226
missouri@sukup.com

Defiance, OH 43512
7724 Rte. 66 N
Ph 419.784.9871
ohio@sukup.com

Jonesboro, AR 72403
5917 E. Johnson Ave.
ph 870.932.7547
arkansas@sukup.com

Watertown, SD 57201
2701 Piper Ave.
ph 605.882.6697
southdakota@sukup.com

L1152-0913

© Copyright 2013. This information contained herein is the exclusive property of Sukup Manufacturing Co.