



Zero-Entry Commercial Sweep



EH Series

16" System for 60' through 156' bins.

12" System for 48' through 135' bins.



Patented Pivot Point allows the sweep to "free-float" to account for variations in concrete.

Sleeved Auger Ends and Heavy-Duty 3" Hanger Bearings support the auger and supply long lasting durability and strength.



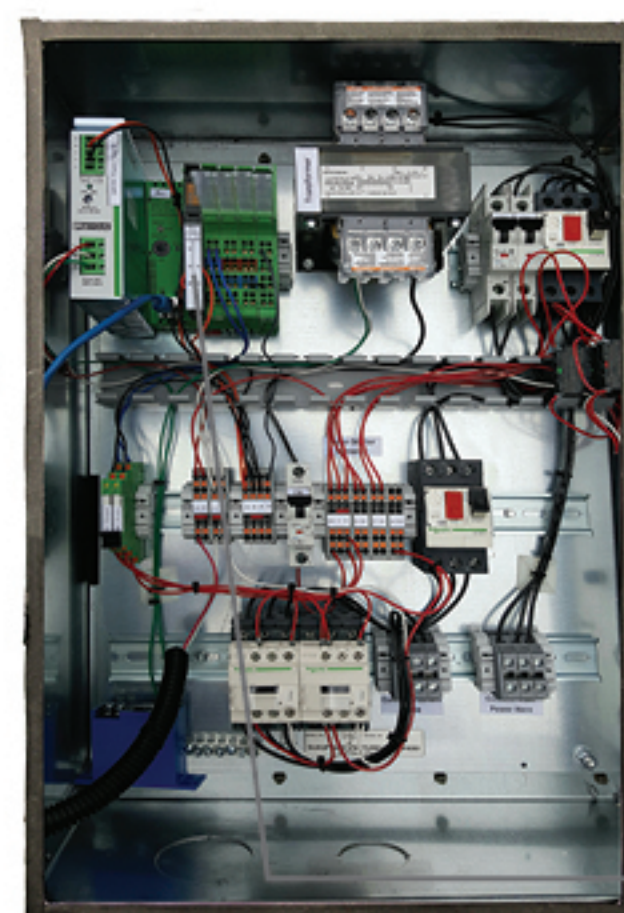
Adjustable Front Auger Shields reduce overfeeding of the auger.



Shallow Center Sump is cast in place and requires less concrete, saving you construction costs. Deeper design is also available.

Explosion-Proof Motors and Industrial Grade Gear Box and bearings for greater safety and durability.

Heavy-Duty Zero-Entry Explosion-Proof Rotating Contact provides power to the sweep. There is no need to enter the bin.



Emergency Stop Button for enhanced safety.

Zero-Entry Automatic Touch Screen Controls allow the pushers' start and stop points to be user programmed on the touch screen to keep the auger running efficiently based on a particular situation. In automatic mode, the controller senses auger load and advances the sweep without overloading the auger motor, preventing spinning of the pusher tires, which can cause extra wear. The sweep controls also have a manual mode that allows the operator to control sweep advancement

Programmable Logic Controller (PLC) provides greater reliability.

* AE50 Awards are presented by the American Society of Agricultural and Biological Engineers for outstanding engineering innovations in agriculture. In order to be chosen for an AE50 Award, products must be truly new innovations that are expected to save producers time, costs and labor.

“Sukup Manufacturing has truly developed a zero-entry bin sweep...”

See the whole interview at [youtube.be/Nn-8Cy-yFJg](https://www.youtube.be/Nn-8Cy-yFJg) or scan this code with a QR code reader on your smart phone



Kevin Howes - Plant Manager
Homeland Energy Solutions

Industrial Grade Pushers are equipped with explosion-proof motors and foam-filled tires for safety and durability. Pusher speed is based upon their location on the auger through the use of varying gear ratios. This results in the pushers applying uniform pressure to the sweep, reducing wear on the inside pushers.



Heavy-Duty Frame designed to provide optimal strength to withstand the intense pressure of deep grain depths. (Paneling removed to show frame)



Heavy-Duty Steel Pivot Wheels with bronze bushings.



Adjustable Rubber-Tipped Scraper behind the auger maximizes the amount of grain collected along the bin floor.



Industrial Grade Wear Track protects aeration tunnels.



Sukup Manufacturing Co. ■ www.sukup.com

Box 677 ■ 1555 255th St. ■ Sheffield, IA 50475-0677 ■ ph 641.892.4222 ■ fx 641.892.4629 ■ email info@sukup.com

Distribution Centers

Cameron, MO 64429
7426 NE 352nd St.
ph 816.649.2226
missouri@sukup.com

Arcola, IL 61910
980 E. State Rte. 133
ph 217.268.3026
illinois@sukup.com

Aurora, NE 68818
1705 Hwy. 34 E.
ph 402.694.5922
nebraska@sukup.com

Defiance, OH 43512
7724 Rte. 66 N.
ph 419.784.9871
ohio@sukup.com

Jonesboro, AR 72403
204 Best Industrial Dr.
ph 870.932.7547
arkansas@sukup.com

Watertown, SD 57201
2701 Piper Ave.
ph 605.882.6697
southdakota@sukup.com